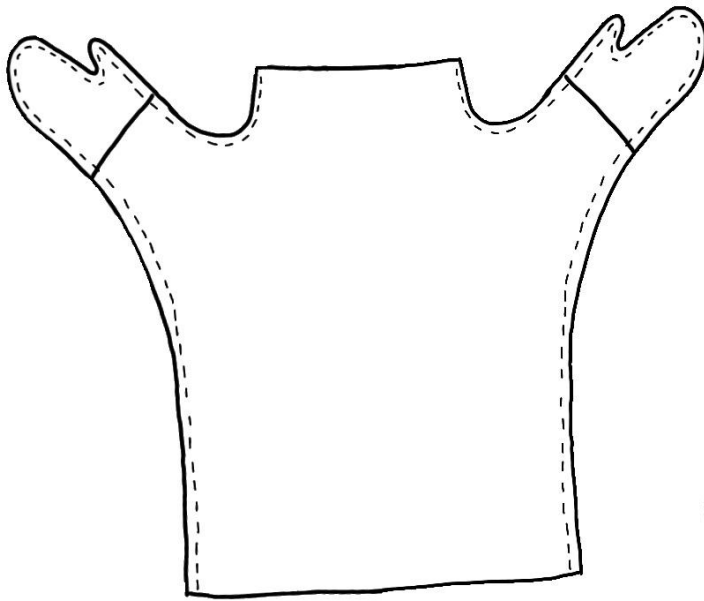




Miss Stitcham explains how to make a costume for a glove puppet.

*This is a very simple outfit to make.
Cut out two patterns from a piece
of material and four glove patterns.*

Machine glove to each sleeve, so



*Lay flat, fronts
inwards and machine -*

*all round side seams
leaving a gap at top &
bottom, joining the
two patterns together.
Turn right way round.*



Attach buttons, ribbon or accessories.

